

[]hyphen

HyphenVIEW: The Big Daddy of Reporting

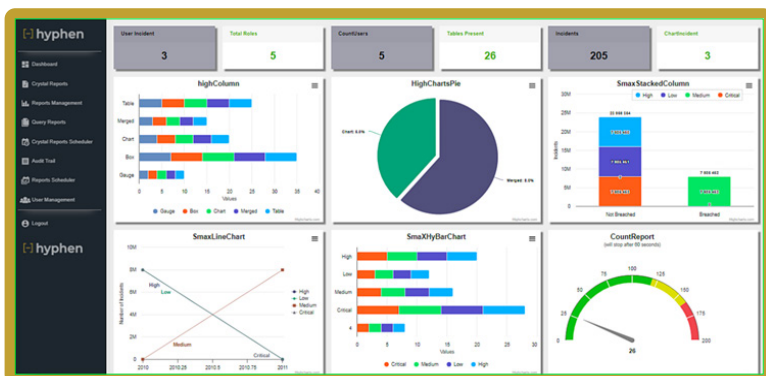


About Me

Hi, I am **HyphenVIEW**. Welcome to my unique world of organizing, managing, and governing vast amounts of structured and unstructured data from IT & Non-IT devices. Those who have used me say that HyphenVIEW is a powerful **Business Intelligence & Data Visualization tool** that comes with self service capabilities. I was designed keeping in mind the need to create **centralized and customizable dashboards & reports** for **real-time data visualization**.

Your Reporting / Viewing Challenges

Do you face trouble gathering and accessing data from multiple sources? Have you faced the challenge of consolidating data, from, let's say diverse databases like IBM DB2, Postgres, MS SQL, Oracle, MySQL, REST API? Do you wish that whatever disparate monitoring is taking place from different sources, should get consolidated into a single "pane" of glass! **If event consolidation and centralized SLA reporting and visualization** have been your "pain" points, I, HyphenVIEW is there to solve it for you. Have a look at this sample dashboard.



The Benefits I provide you

Single Window Pane:

I centralise all monitoring into a "single pane of glass".

Self-service Reporting Framework:

My user-friendly interface lets you access and analyse data seamlessly with minimal dependence on other technical resources.

SLA Report Generation:

I help you conveniently generate and schedule the distribution of reports at specified intervals, ensuring timely delivery of vital information.

Compatibility with RDBMs:

My compatibility with widely used relational databases such as MS SQL, PostgreSQL, MySQL, and IBM Db2, facilitates smooth data connectivity and analysis.

Multi-tenant Reporting:

I allow different users or organizations to access and generate reports specific to their own data and requirements simultaneously.

Cloud /AWS deployment



Key Technical Features

Customer

- Single Windowpane
- Time & Cost Optimization
- Schedule Report
- Data Governance
- Self Service
- Data Analytics
- Data Co-relation
- Drill Down
- Merging of Reports

Business Outcomes/Results

- Process Standardization
- Improved Resource Management

Supported Operating Systems

Microsoft

- Windows Server 2022
- Windows Server 2019

Linux

- Ubuntu 9.x or above
- Red Hat Linux 9.0
- Red Hat Enterprise Linux 7.x

Supported Browsers

- Google Chrome
- Mozilla Firefox
- Mac Safari
- Microsoft Edge

Supported Databases

- IBM DB2
- Postgres
- MS SQL
- Oracle
- MySQL
- REST API

Recognition

Promising Brands of 2022 by Economic Times

Separate Packs Available For

- Micro Focus ITOM
- IBM Instana
- BMC Remedy
- BMC TrueSight

Minimum System Requirement

3 CPU (Dual Core) and 8 GB RAM.
Need to be scaled up based on usage.

[Click here to download other Hyphen Data Sheets](#)

