

[H]yphen

HyphenDIAG: Correct Diagnosis Is Three-Fourths The Remedy

Data Sheet



About Me

Hi, welcome to my world, the world of **HyphenDIAG**. Here is what happens in my world. **Code-level diagnostics** where I go right down to lines of codes to diagnose the problem, figure out the root cause, and remediate it saving a lot of time. I also conduct **application-level diagnostics** to cover APM, application reliability, user experience, monitoring & tracing. I am extremely useful in **diagnosing hop times** on query hops at DNS or network server etc. And let me share this, that even before the web page loads, through **web browser injection** I check page loading performance, monitor end user experience, page access rate and smoothness on movement to page sections. How about accidental or unplanned or malicious **changes to the application code / configuration?** I detect that too. I can also provide **trace & event details** of the monitoring applications.

Your Diagnostics Challenges

The diagnostics challenges that are often spoken about are around investigating application code issues, issue remediation, slowness of response, unsatisfactory user experience, page access rate, slowness in movement to page sections etc. If these and other related issues are the ones you have been facing, allow me to solve them for you.

The Benefits I Provide You

Distributed Tracing And Alerting:

I provide an end-to-end journey of requests and identification of performance issues.

Metric Collection And Visualization:

I collate & display metrics from various sources within your applications and infrastructure to provide insights into the performance and health of your system.

My Compatibility With Programming Languages:

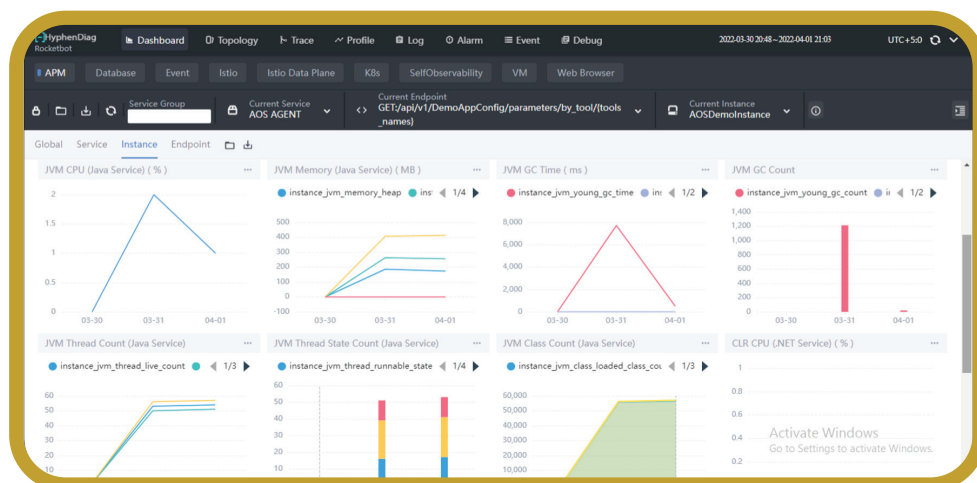
Java, .Net core, Python, PHP, and Ruby.

My Compatibility With Frameworks:

Spring Boot, Servlet API, Express.js, Django, Flask, Gin, and Ruby on Rails.

Self-Service Reporting Framework:

My user-friendly interface lets you access and analyse data seamlessly with minimal dependence on other technical resources.



[H]yphen

HyphenDIAG: Correct Diagnosis Is Three-Fourths The Remedy

Data Sheet



Key Technical Features

Customer

- Observability Capabilities
- Endpoint Metrics Analysis
- Endpoint Dependency Analysis
- Service Topology Map Analysis
- Synthetic Monitoring
- Database Access Metrics
- Collaboration Across Metrics & Traces

Business Out Comes / Results

- Distributed Tracing
- Alerting & Anomaly Detection
- Metric Correlation and Visualization
- Plug-in System
- Proactive Monitoring
- Alert Co-relation

Supported Operating Systems

- Windows Platform
- Standard Linux

Supported Browsers

- Google Chrome
- Mozilla Firefox
- Mac Safari
- Microsoft Edge
- Zoho Ulaa
- Brave

Supported Databases

- MySQL
- PostgreSQL
- MongoDB
- Redis
- Elasticsearch

Frameworks and Technologies

- MySQL
- PostgreSQL
- MongoDB
- Redis
- Elasticsearch

Programming Languages and Runtimes

- Java
- .NET Core
- Node.js
- Python
- Go (Golang)
- PHP
- Ruby

HTTP and Web Frameworks

- HTTP
- HTTPS
- RESTful APIs
- GraphQL

Observability Stack Integration

- Prometheus
- Grafana
- Elasticsearch
- Kibana

Recognition

Promising Brands of 2022 by Economic Times

Minimum System Requirement

4 CPU (Dual Core) and 8 GB RAM. Need to be scaled up based on usage.

[Click here to download other Hyphen Data Sheets](#)

